

ZOLA SOFT-MATTE



EX-STOCK

MADE TO ORDER

White	White
Porcelain	Porcelain
Light Grey	Light Grey
Cashmere	Cashmere
Dust Grey	Dust Grey
Indigo	Indigo
Graphite	Graphite

DOOR SPECIFICATION

Description	Slab
Finish	Soft touch matte PET foil and lacquered
Frame material	MDF
Door thickness	18mm
Edge colour	As face - ABS
Reverse colour	As face - melamine matte

LEAD TIMES EXCLUDING DELIVERY (WORKING DAYS)

FINISH	STANDARD PRODUCTS	MADE TO ORDER DOORS & PANELS
PET Foil	EX	10

STANDARD
DRAWERFRONTS & DOORS

- 115 x 597
- 140 x 297
- 140 x 397
- 140 x 447
- 140 x 497
- 140 x 597
- 140 x 797
- 140 x 897
- 140 x 997
- 140 x 1197
- 175 x 397
- 175 x 497
- 175 x 597
- 283 x 497
- 283 x 597
- 283 x 797
- 283 x 897
- 283 x 997
- 283 x 1197
- 355 x 497
- 355 x 597
- 355 x 797
- 355 x 897
- 355 x 997
- 355 x 1197
- 450 x 597
- 495 x 597
- 570 x 297
- 570 x 397 sample door
- 570 x 447
- 570 x 497
- 570 x 597
- 645 x 597
- 715 x 147
- 715 x 275
- 715 x 275 pair
- 715 x 297
- 715 x 315
- 715 x 315 pair
- 715 x 347
- 715 x 397
- 715 x 447
- 715 x 497
- 715 x 547
- 715 x 597
- 895 x 297
- 895 x 347
- 895 x 397
- 895 x 447
- 895 x 497
- 895 x 597
- 980 x 597
- 1245 x 297
- 1245 x 397
- 1245 x 447
- 1245 x 497
- 1245 x 597
- 1965 x 497
- 1965 x 597

STANDARD DOORS



STANDARD DOOR

STANDARD ACCESSORIES



CORNICE / LIGHT PELMET
28 X 3000 X 50



PLINTH
150 X 3050 X 16



30MM CORNER POST
715 X 30 X 30



INTERNAL
CORNER POST
715 X 70 X 18



UNIVERSAL MOULDING
35 X 3050 X 60



PLAIN END PANEL
780 X 360 X 18
900 X 650 X 18
900 X 1200 X 18
910 X 2430 X 18
960 X 360 X 18
2430 X 650 X 18

MADE TO ORDER DOORS & PANELS



PLAIN END PANEL

SIZE PARAMETERS:

	Height (mm)		Width (mm)	
	Min	Max	Min	Max
Drawers/Doors	70	900	120	1200
Doors/Panels	901	1250	120	900
Tall Doors/Panels	1251	2500	120	800

ZOLA SOFT-MATTE HANDLELESS



EX-STOCK

MADE TO ORDER

 White	 White
 Porcelain	 Porcelain
 Light Grey	 Light Grey
 Cashmere	 Cashmere
 Dust Grey	 Dust Grey
 Indigo	 Indigo
 Graphite	 Graphite

DOOR SPECIFICATION

Description	Slab
Finish	Soft touch matte PET foil and laquered
Frame material	MDF
Door thickness	18mm
Edge colour	As face
Reverse colour	As face - melamine matte

LEAD TIMES EXCLUDING DELIVERY (WORKING DAYS)

FINISH	STANDARD PRODUCTS	MADE TO ORDER DOORS & PANELS
PET Foil	EX	10

HANDLELESS DOORS & ACCESSORIES

160 x 497
160 x 597
160 x 797
160 x 897
160 x 997
160 x 1197
325 x 497
325 x 597
325 x 797
325 x 897
325 x 997
325 x 1197
685 x 147
685 x 297
685 x 315
685 x 315 pair
685 x 347
685 x 397
685 x 447
685 x 497
685 x 597



HALF HEIGHT
INTERNAL
CORNER POST
325 X 70 X 70



INTERNAL
CORNER POST
685 X 70 X 70



HALF HEIGHT
EXTERNAL
CORNER POST
325 X 46 X 46



EXTERNAL
CORNER POST
685 X 46 X 46



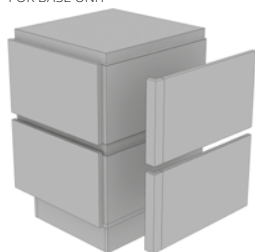
HALF HEIGHT
PLAIN END PANEL
325 X 808 X 18
325 X 1108 X 18



PLAIN END PANEL
685 X 808 X 18
685 X 1108 X 18
685 X 1200 X 18

HANDLELESS KITS

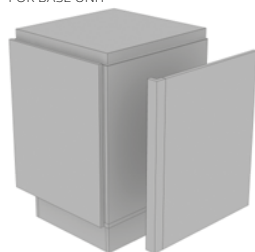
HALF HEIGHT L-SHAPE PANEL & POST KIT FOR BASE UNIT



HALF HEIGHT L SHAPE PANEL & POST KIT FOR BASE UNIT*

CODE	KIT INCLUDES
prefix-325600LPANPTKT	1 x half height external corner post 1 x plain end panel 325 x 808 2 x mdf fixing batons

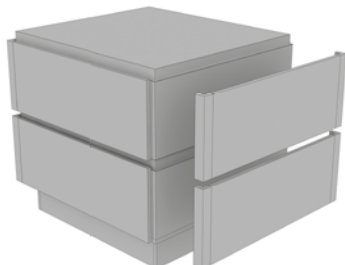
FULL HEIGHT L-SHAPE PANEL & POST KIT FOR BASE UNIT



FULL HEIGHT L SHAPE PANEL & POST KIT FOR BASE UNIT

CODE	KIT INCLUDES
prefix-685600LPANPTKT	1 x external corner post 1 x plain end panel 685 x 808 2 x mdf fixing batons

HALF HEIGHT C-SHAPE PANEL & POST KIT FOR 900 & 1200 WIDE ISLANDS



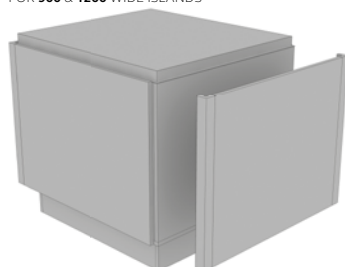
HALF HEIGHT C SHAPE PANEL & POST KIT FOR 900 WIDE ISLAND*

CODE	KIT INCLUDES
prefix-325900CPANPTKT	2 x half height external corner posts 1 x plain end panel 325 x 808 2 x mdf fixing batons

FULL HEIGHT C SHAPE PANEL & POST KIT FOR 900 WIDE ISLAND

CODE	KIT INCLUDES
prefix-685900CPANPTKT	2 x external corner posts 1 x plain end panel 685 x 808 2 x mdf fixing batons

FULL HEIGHT C-SHAPE PANEL & POST KIT FOR 900 & 1200 WIDE ISLANDS



HALF HEIGHT C SHAPE PANEL & POST KIT FOR 1200 WIDE ISLAND*

CODE	KIT INCLUDES
prefix-3251200CPANPTKT	2 x half height external corner posts 1 x plain end panel 325 x 1108 3 x mdf fixing batons

FULL HEIGHT C SHAPE PANEL & POST KIT FOR 1200 WIDE ISLAND

CODE	KIT INCLUDES
prefix-6851200CPANPTKT	2 x half height external corner posts 1 x plain end panel 685 x 1108 3 x mdf fixing batons

Please refer to pages 238-243 for fitting details.

* Please note: 2 panel kits are required for each half-height base run / island end solution.