

ZOLA GLOSS

EX
EX-STOCK



EX-STOCK

	White
	Porcelain
	Light Grey
	Cashmere
	Dust Grey
	Graphite

DOOR SPECIFICATION

Description	Slab
Finish	High gloss polyurethane
Base material	MDF
Door thickness	18mm
Edge colour	As face - gloss
Reverse colour	As face - melamine matte

LEAD TIMES EXCLUDING DELIVERY (WORKING DAYS)

FINISH	STANDARD PRODUCT
Painted ex-stock colours	EX

STANDARD DRAWERFRONTS & DOORS

115 x 597
140 x 297
140 x 397
140 x 447
140 x 497
140 x 597
140 x 797
140 x 897
140 x 997
140 x 1197
175 x 397
175 x 497
175 x 597
283 x 497
283 x 597
283 x 797
283 x 897
283 x 997
283 x 1197
355 x 497
355 x 597
355 x 797
355 x 897
355 x 997
355 x 1197
450 x 597
495 x 597
570 x 297
570 x 397 sample door
570 x 447
570 x 497
570 x 597
645 x 597
715 x 147
715 x 257
715 x 267
715 x 275
715 x 275 pair
715 x 297
715 x 315
715 x 315 pair
715 x 320 quadrant door
715 x 347
715 x 397
715 x 447
715 x 497
715 x 497 plain frame
715 x 547
715 x 597
895 x 297
895 x 347
895 x 397
895 x 447
895 x 497
895 x 497 plain frame
895 x 597
980 x 597
1245 x 297
1245 x 397
1245 x 447
1245 x 497
1245 x 597
1965 x 497
1965 x 597

STANDARD DOORS



STANDARD DOOR



PLAIN FRAME
includes frosted glass



QUADRANT DOOR

STANDARD ACCESSORIES



CORNICE / LIGHT PELMET
28 X 3000 X 50



PLINTH
150 X 3050 X 18



QUADRANT CORNICE
28 X 450 X 450



QUADRANT PLINTH
150 X 430 X 320



30MM CORNER POST
715 X 30 X 30



INTERNAL CORNER POST
715 X 70 X 18



PLAIN END PANEL
780 X 360 X 18
900 X 650 X 18
900 X 1200 X 18
910 X 2430 X 18
960 X 360 X 18
2430 X 650 X 18

ZOLA GLOSS HANDLELESS

EX
EX-STOCK



EX-STOCK

	White
	Porcelain
	Light Grey
	Cashmere
	Dust Grey
	Graphite

DOOR SPECIFICATION

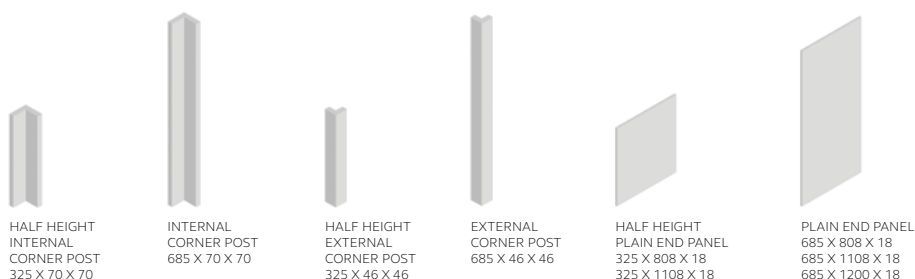
Description	Slab
Finish	High gloss polyurethane
Base material	MDF
Door thickness	18mm
Edge colour	As face - gloss
Reverse colour	As face - melamine matte

LEAD TIMES EXCLUDING DELIVERY (WORKING DAYS)

FINISH	STANDARD PRODUCT
Painted ex-stock colours	EX

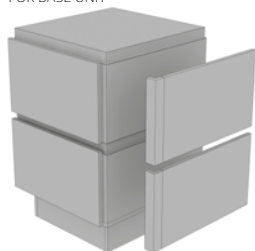
HANDLELESS DOORS & ACCESSORIES

160 x 497
160 x 597
160 x 797
160 x 897
160 x 997
160 x 1197
325 x 497
325 x 597
325 x 797
325 x 897
325 x 997
325 x 1197
490 x 597
685 x 147
685 x 297
685 x 315
685 x 315 pair
685 x 347
685 x 397
685 x 447
685 x 497
685 x 597

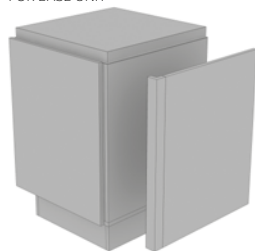


HANDLELESS KITS

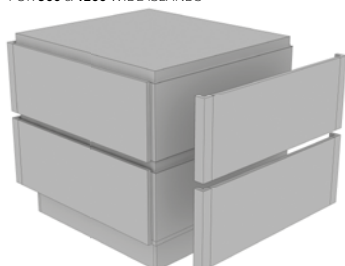
HALF HEIGHT L-SHAPE PANEL & POST KIT FOR BASE UNIT



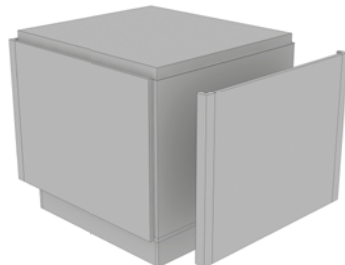
FULL HEIGHT L-SHAPE PANEL & POST KIT FOR BASE UNIT



HALF HEIGHT C-SHAPE PANEL & POST KIT FOR 900 & 1200 WIDE ISLANDS



FULL HEIGHT C-SHAPE PANEL & POST KIT FOR 900 & 1200 WIDE ISLANDS



HALF HEIGHT L SHAPE PANEL & POST KIT FOR BASE UNIT*

CODE	KIT INCLUDES
prefix-325600LPANPTKT	1 x half height external corner post 1 x plain end panel 325 x 808 2 x mdf fixing batons

FULL HEIGHT L SHAPE PANEL & POST KIT FOR BASE UNIT

CODE	KIT INCLUDES
prefix-685600LPANPTKT	1 x external corner post 1 x plain end panel 685 x 808 2 x mdf fixing batons

HALF HEIGHT C SHAPE PANEL & POST KIT FOR 900 WIDE ISLAND*

CODE	KIT INCLUDES
prefix-325900CPANPTKT	2 x half height external corner posts 1 x plain end panel 325 x 808 2 x mdf fixing batons

FULL HEIGHT C SHAPE PANEL & POST KIT FOR 900 WIDE ISLAND

CODE	KIT INCLUDES
prefix-685900CPANPTKT	2 x external corner posts 1 x plain end panel 685 x 808 2 x mdf fixing batons

HALF HEIGHT C SHAPE PANEL & POST KIT FOR 1200 WIDE ISLAND*

CODE	KIT INCLUDES
prefix-3251200CPANPTKT	2 x half height external corner posts 1 x plain end panel 325 x 1108 3 x mdf fixing batons

FULL HEIGHT C SHAPE PANEL & POST KIT FOR 1200 WIDE ISLAND

CODE	KIT INCLUDES
prefix-6851200CPANPTKT	2 x half height external corner posts 1 x plain end panel 685 x 1108 3 x mdf fixing batons

Please refer to pages 238-243 for fitting details.

* Please note: 2 panel kits are required for each half-height base run / island end solution.